

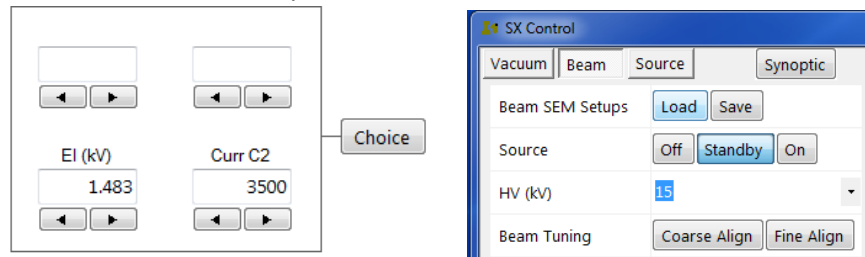
EPMA Standby Procedures

Disclaimer:

Failure to follow these procedures will cause aperture contamination, damage to the instrument and standards. It will be considered negligence from the user.

Once you are finished with your measurements:

- 1- Set C2 to 3500 then Press Standby.



- 2- Turn optical microscope light off.
- 3- If you need to remove the sample refer to *Sample Exchange SOP*.

NOTE: Make sure you wear gloves before handling the sample holder or any samples.

- 4- Once sample holder is removed, uninstall your blocks from the sample holder, remove unused setscrews and place in provided pink round container.

Warning: Set screws left on the sample holders empty spaces will eventually fall into the stage causing extensive damage.

- 5- At this point the Airlock will be vented. Place the sample holder inside the airlock, close the door and pump the airlock down. (With the mouse hover over the airlock image, right click and press Pump Airlock. This will leave the sample holder and standards under vacuum.



- 6- **Warning:** Under any circumstance do not leave the sample holder with standards outside. You can also store it under vacuum in the JEOL vacuum box behind the Tescan SEM.
- 7- Check again that Source is set to Standby.

