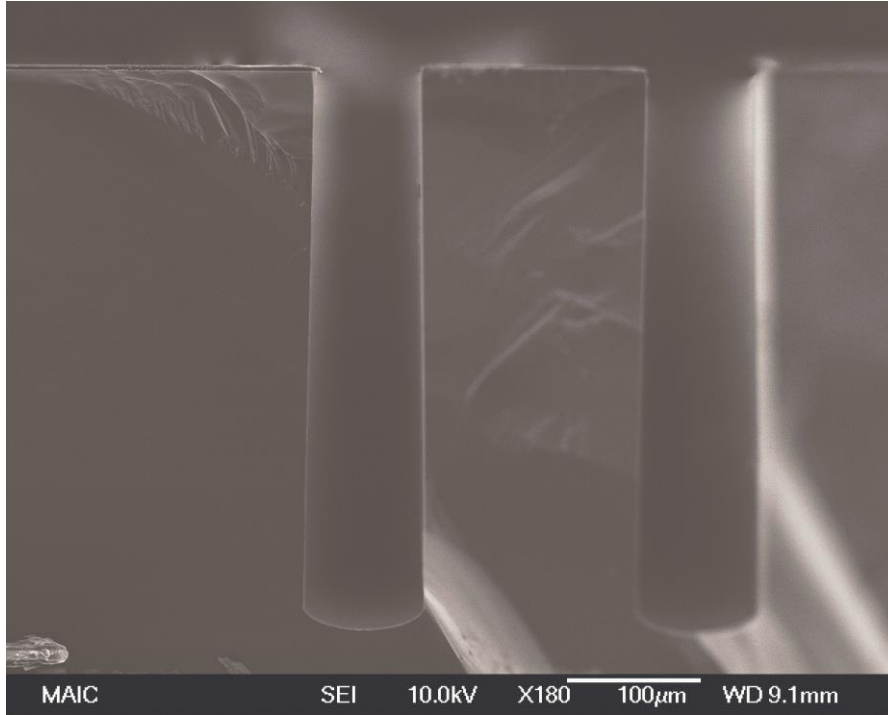


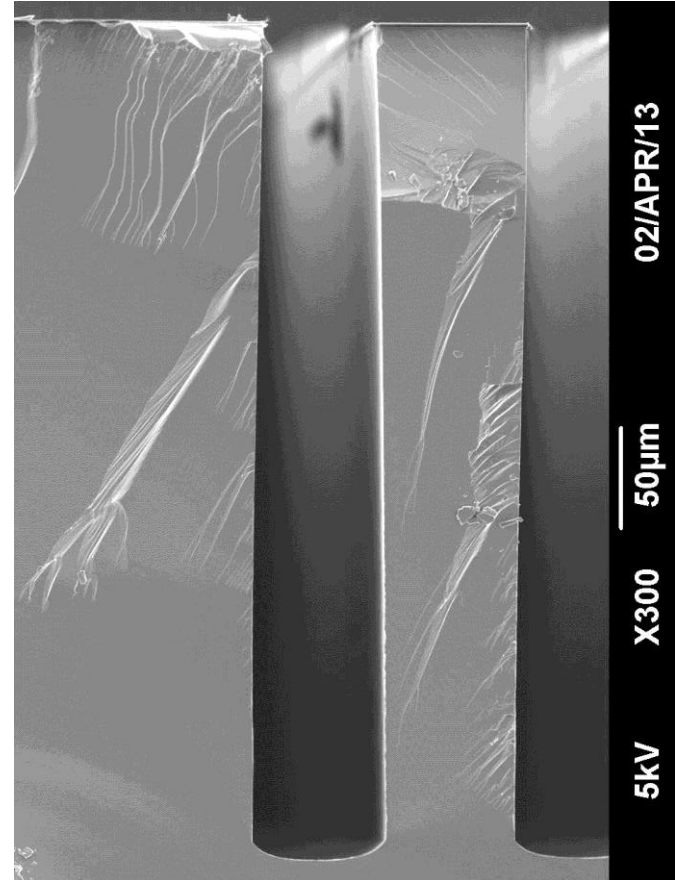
# 80 X 400 $\mu$ m Deep Etch Qual

## Recipe BAO2CAL

Original Qual



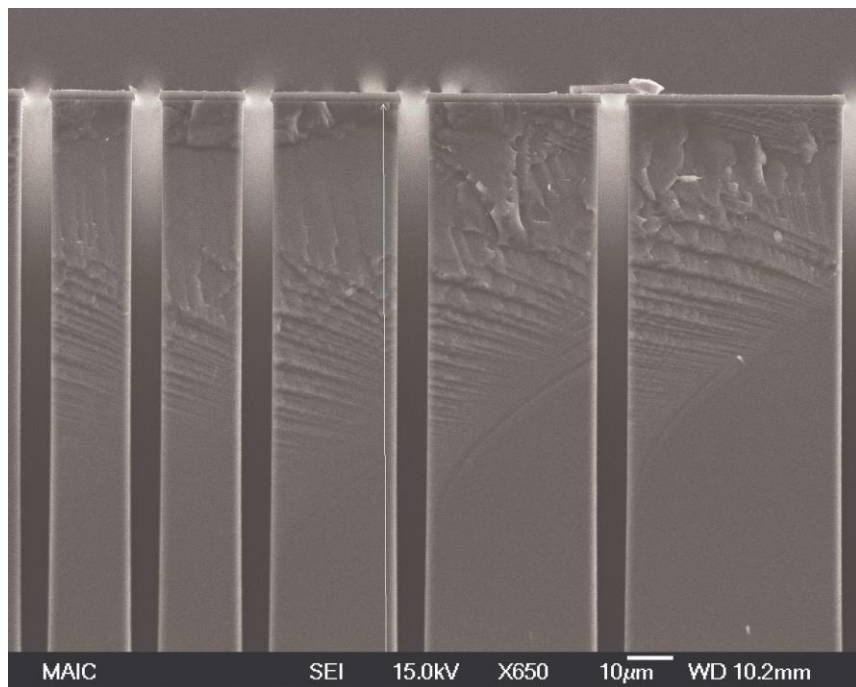
Today 60 X 400 $\mu$ m Deep  
Did not have 80 $\mu$ m feature on mask



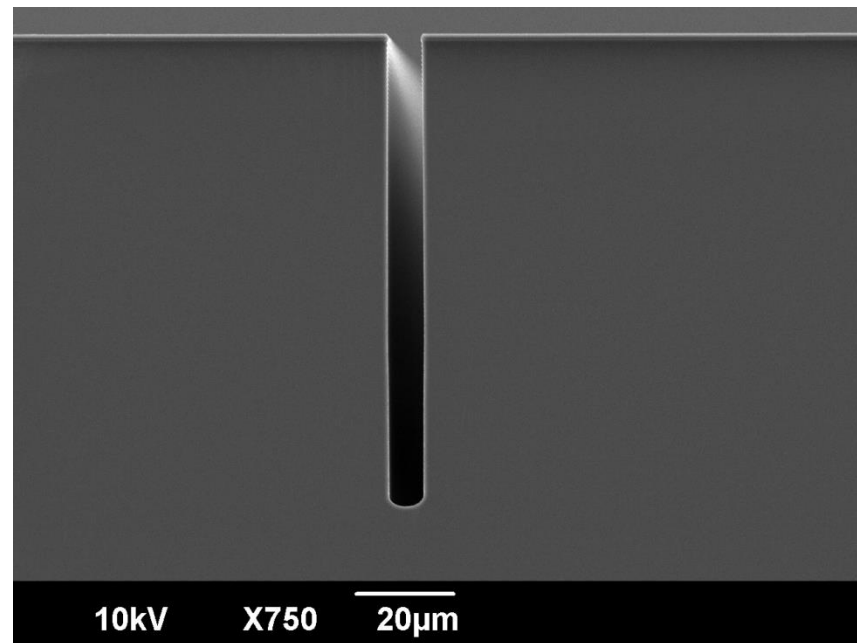
	Original	Now
Etch Rate ( $\mu$ m/min)	2.93	2.57
Non-uniformity	1.40%	1.36%
Selectivity	~90:1	~90:1
Profile	~90.59°	~90.63°

# 5 X 100 $\mu$ m Deep Etch Qual Recipe ProA

Original Qual



Today

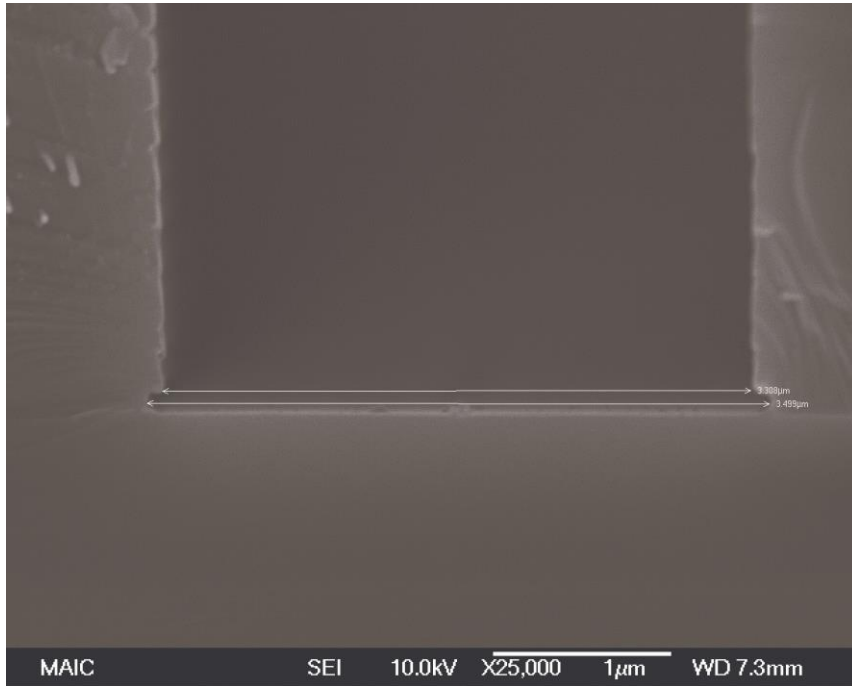


	Original	Now
Etch Rate ( $\mu$ m/min)	1.77	2.11
Non-uniformity	1.30%	0.85%
Selectivity	~60:1	~75:1
Profile	~89.9°	~89.9°

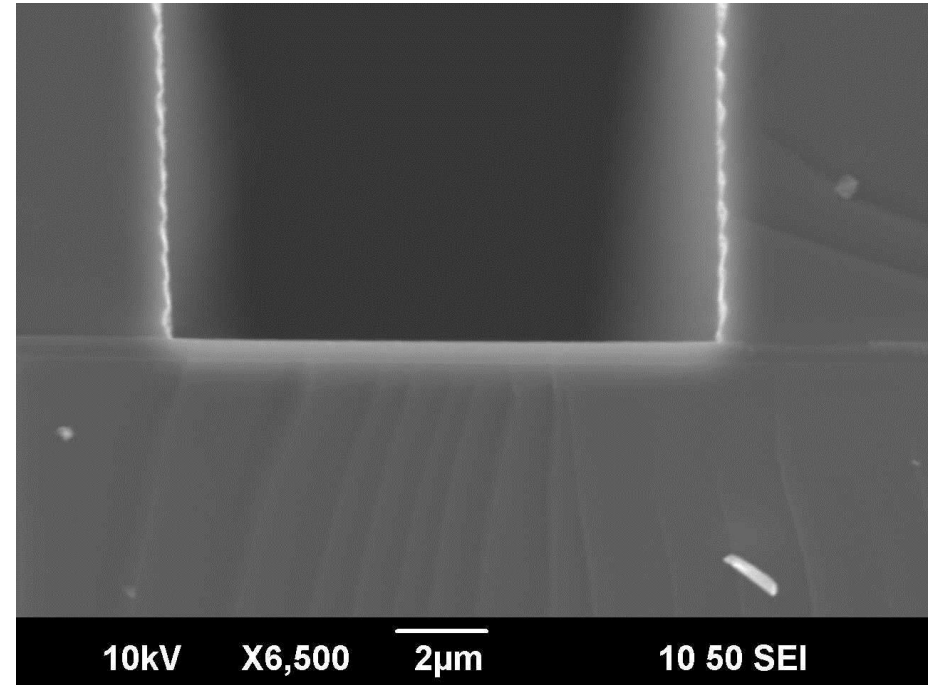
# SOI Footing Functionality

## Recipe SOI\_ETCH

Original Qual



Today (30% Over-etch)



	Original	Now
Etch Rate ( $\mu\text{m}/\text{min}$ )	1.86	2.21
Non-uniformity	-	-
Selectivity	~46:1	~150:1
Profile	~89.84°	~89.7°

New recipe to address grass formation issues in deeper etches on original recipe

← Performed on pieces